

WALKING THE DEBRIS FIELD

Public Geographies of the Halifax Explosion

A Natural History

Public Walk

Presented by Narratives in Space + Time Society



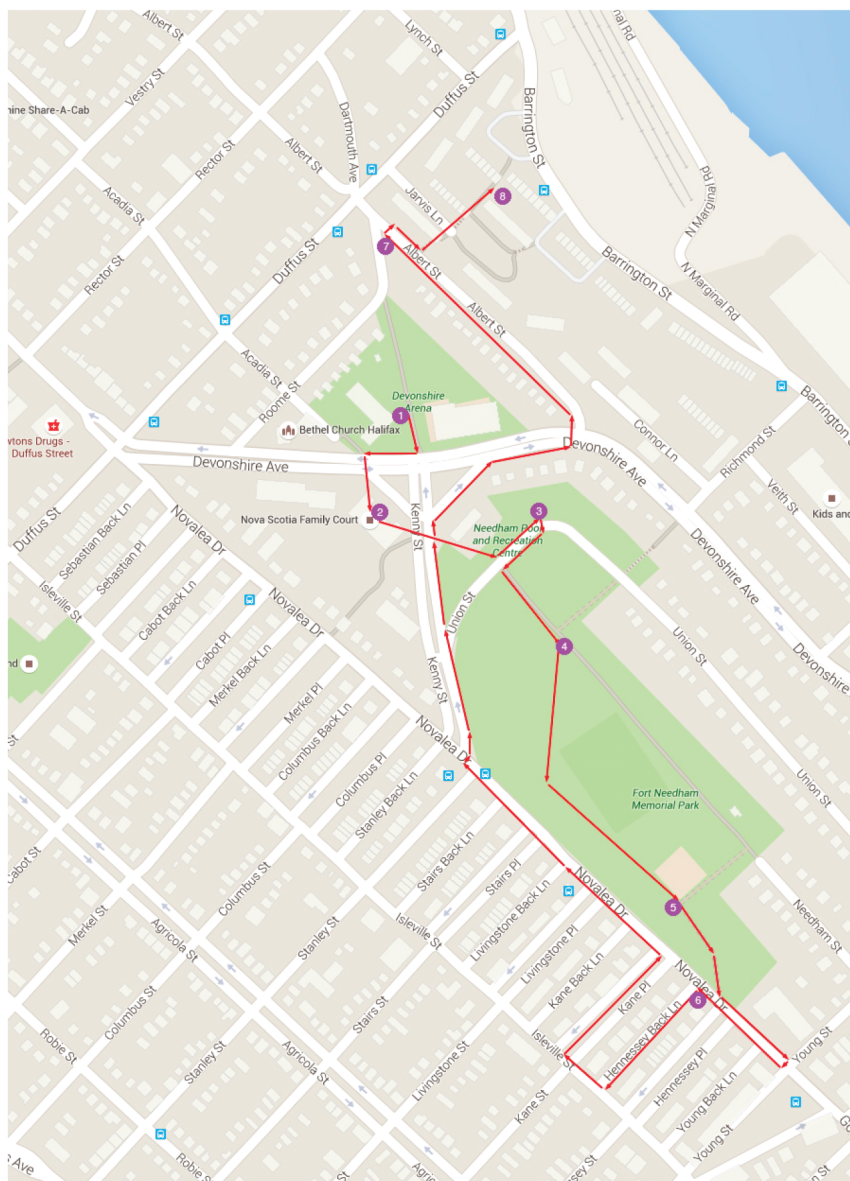
Richmond 1977, Robert Bean

Sunday December 6, 2015 at 12 noon
Starting behind the Devonshire Arena
3405 Devonshire Avenue
Halifax, Nova Scotia

WALKING THE DEBRIS FIELD

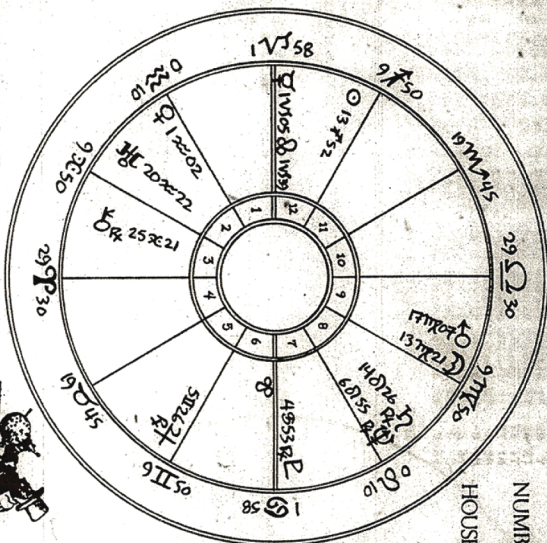
Public Geographies of the Halifax Explosion

A Natural History



Presented by Narratives in Space + Time Society

BIRTH CHART



NAME HALFAX EXPLOSION
 - AFTER COLLIDING WITH THE "LHO" PLANET
 SPREAD ON THE "MONT BLANC" AND
 NUMBER THE EXPLODED
 Birth date _____
 Birth place _____

HOUSE SYSTEM Koch

Birth time as given
Zone standard * E-W+
Summer (ur double) time *
G.M.T.
G.M.T. date 6:12:17

6	DEC 17	
44	1544	N.S
44	39	N
68	36	W
H	N	S
9	05	
4		
1	05	P.M.

Ruling Planet	Positive	Triplicities:
Ruler's House	Negative	Fire
Rising Planet	Angular	Earth
Mutual Reception		Air
		Water
		Quadruplicities
		Cardinal
		Fixed

PROCESSED DATA

☉ _____ P ♀ _____ P h _____
 ♃ _____ P ♂ _____ P Asc. _____
 ♄ _____ P ♃ _____ P M.C. _____
 ♅ _____ P ♅ _____

Sign=

D. M. Y, _____
 COON POSITIONS _____ Prog.
 CORRESPOND TO _____ Noon Date

vertex - 128)45

collision $mc = 22.5 \times 50 / \text{ASC} = 207 \times 10^3$

Note: COLLISION OCCURRED APPROX. 8:40 AM (THURSDAY)

♈	♉	♊	♋	♌	♍	♎	♏	♐	♑	♒	♓
ARIES	TAURUS	GEMINI	CANCER	LEO	VIRGO	LIBRA	SCORPIO	SAGITTARIUS	CAPRICORN	AQUARIUS	PISCES

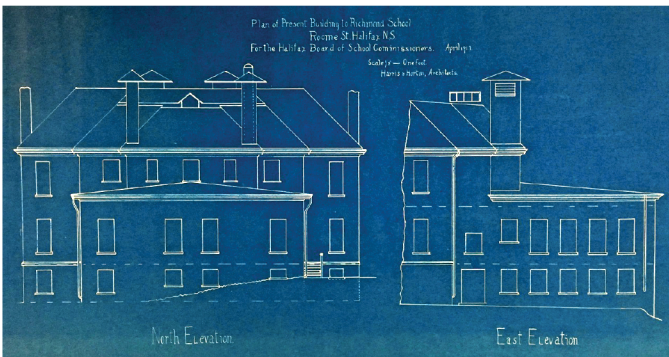


PLANET	DEC.	ASPECTS
SUN		☉
MOON		☾
MERCURY		☿
VENUS		♀
MARS		♂
JUPITER		♃
SATURN		♄
URANUS		♅
NEPTUNE		♆
PLUTO		♇
Asc.		Asc.
M.C.		M.C.

Walking the Debris Field: Public Geographies of the Halifax Explosion A Natural History

This walk is an opportunity for us to meet and converse informally with others. We have planned some events and presentations to take place at specific sites along the way. Here are some highlights about those sites where we will be stopping:

1. We are starting at the Devonshire Community Garden, near the site of the original Richmond School on Roome Street. The granite stones along the edge of the parking lot are said to be from the Richmond Printing Company, destroyed during the Explosion. The XYZ sculptural marker was built in Summer 2014 by students from Dalhousie University's School of Architecture. Its shape refers to the foundations and chimneys of the ruined houses in this neighbourhood, and the braille panels hold the names of the 1,963 people known to have died in the Explosion.



2. The next stop is the Supreme Court Family Division Courthouse (in what was the “new” Richmond School building, designed by Andrew R. Cobb as part of the reconstruction effort, and opened in 1921 to replace the school on Roome Street). We will meet Annie Perry Campbell inside; she and her family lived nearby on Kenny Street at the time of the Explosion.

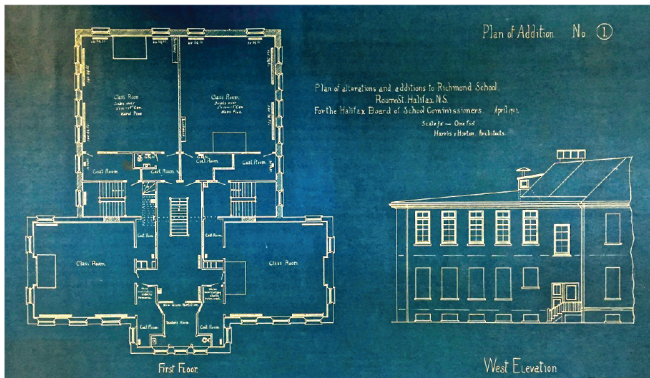
3. Moving up the Richmond slope on the northeast side of the drumlin known as Needham Hill, we arrive at the North End Community Circle Garden. Overlooking the harbour, we can see beyond the spruces to the Narrows. The view of Ground Zero, where the Mont Blanc exploded at 9:04:35 on December 6, 1917, is now obstructed by the new Irving Shipyard buildings. Arctic patrol ships start here. Across the Narrows is Turtle Grove, Mi’kmaq land.

4. We move up the walkway to the Explosion Memorial at Needham Park, and behind it, a grove of beech trees. Are they survivor trees? Barbara Orr was a survivor, and donated the carillon bells in the tower. What plans are in store for Needham Park, as the centenary of the Explosion nears?

5. Along the back of the playing field and tennis court is the ridge defining the western slope of the drumlin. The hill buffered this part of the north end from the worst effects of the Explosion. Overlooking the Hydrostone neighbourhood, we can see the reconstruction plan living on in the boulevards, laneways and urban forest of the grid.

6. We will explore several laneways and boulevards in the Hydrostone, perhaps taking a few moments to draw or make notes about the reconstruction plantings here. You will find charcoal and paper in your tussie-mussie. Even though most of the leaves have now fallen from the trees, we can see that the canopy is quite generous here, with over 25% coverage in this neighbourhood.

7. Leaving the Hydrostone and circling back to the area of the Richmond slope closest to the Explosion site, we will stop next at the corner lot where Albert Street meets Kenny. The ruins of shattered houses are buried below the grass here. Looking back up the hill, we can imagine the Richmond School on Roome Street, and the children in the streets that morning, making their way to school.



8. Our walk ends just down the hill, in the Progress in the Park community garden off Jarvis Lane. Look through the trees and see the sign on the Irving Shipyard Assembly Hall just to the south. Mulgrave Park is home to many Haligonians, and adults, youth and children from this busy neighbourhood participate in activities organized by community organizations such as the Caring and Learning Centre, the Phoenix Youth program, Progress in the Park, and 4Cs community art projects. Please stay to enjoy refreshments and conversation in the garden here.

Rosemary is a symbol of remembrance. Lavender brings a calming effect. Brambles are for remorse.

NiS+TS acknowledges the contributions of our collaborators:

Dr. Peter Duinker (Professor of Resource and Environmental Studies), Angela Henderson (Model maker), Ray Dubé (Technician), James MacLean (Actor), Madeleine Putnam (as Arthur Lismer), Madeleine Peet (as Annie Perry Campbell), Catherine Martin (Mi'kmaq storyteller and filmmaker), Mel Doiron (Ceramicist), Paige Farah (Community developer, Progress in the Park), Brian Downey (Videographer), Adriana Lilley and Julia Lilley (S'mores)

Thank you for walking with us today. We are planning more events in the debris field during the coming year; please see the contact information below to keep in touch.

<https://www.facebook.com/narrativesinspaceandtimesociety>

www.narrativesinspaceandtime.ca

NISTYHZ@gmail.com

<https://twitter.com/NiSTSNS> #halifaxexplosion



Grade 5 & 6, Richmond School, 1916 (Maritime Museum of the Atlantic)

NiS+TS (Narratives in Space+Time Society) is an interdisciplinary creative research group working on art projects involving mobile media and walking.

Founded in 2012 and based in Halifax and Dartmouth, Nova Scotia, NiS+TS promotes the use of mobile media by artists and members of the public. NiS+TS projects are sited in spaces that are often overlooked, disused or vacant. Participants use mobile media such as GPS, smartphones and mobility tracking devices, in combination with other modes (such as walking, talking and making objects) in interactive explorations of locations and subjects. The members of NiS+T are Robert Bean, Renée Gruszecki, Brian Lilley, Barbara Louder and Mary Elizabeth Luka.

Please note that this event is being videotaped for documentation and promotional purposes, and by participating, you are consenting to our use of the material. If you don't wish to be recorded, please stay behind the camera operator.